

Avondale Business Association High-Level CCTV Design by SaferCities

Drawing Schedule – 7 Pages

- Page 1 - Cover Page
- Page 2 – High-Level BOM & Camera List
- Page 3 – Cameras Outside the Family Centre
- Page 4 – Cameras in the Rosebank Road Area
- Page 5 – Cameras Near Roundabout
- Page 6 – All Cameras
- Page 7 – Poles for AT Cameras



Camera Types Used



Type 1 – Dome
Used under awnings



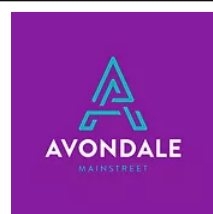
Type 4 – Bullet
Used on poles



Type 13 – Multi-Imager
Used on poles and under awnings for a 4 in 1 view



				Drawing Title Avondale Business Association - High Level CCTV Design v1.2.vsd Cover Page	Legend New Fixed Camera Multi-Imager Camera Wireless Link Light Pole
	Revised Feb 23, 2022	Drawn by Chris Tichborne & Adam Parlane			



SaferCities

Revised
Feb 23, 2022



Drawn by
Chris Tichborne & Adam Parlane

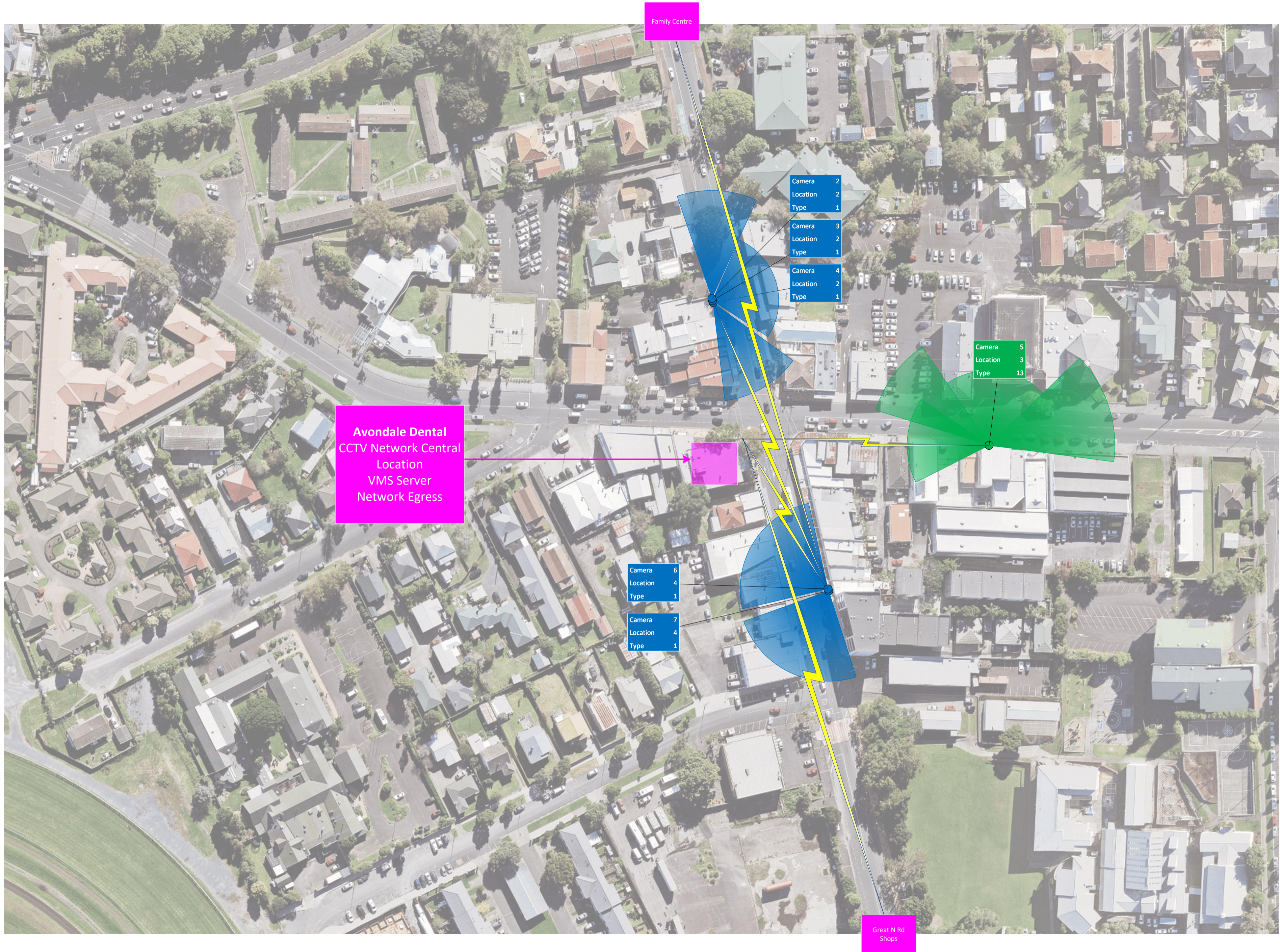
Page
3 of 7

Drawing Title
Avondale Business Association - High Level CCTV Design
v1.2.vsd
Cameras Outside the Family Centre

- New Fixed Camera
- Multi-Imager Camera

Legend

- Wireless Link
- Light Pole





Camera 8
Location 5
Type 1

Camera 9
Location 5
Type 1

Camera 10
Location 6
Type 1

Camera 11
Location 7
Type 1

Camera 12
Location 8
Type 1

Camera 13
Location 8
Type 4

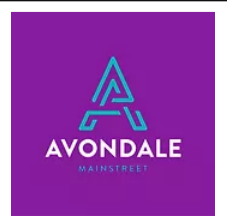
Camera 14
Location 8
Type 1

Camera 15
Location 9
Type 13

Camera 16
Location 10
Type 1

Camera 17
Location 10
Type 1

Avondale Dental



Revised
Feb 23, 2022



Drawn by
Chris Tichborne & Adam Parlane

Page
5 of 7

Drawing Title
Avondale Business Association - High Level CCTV Design
v1.2.vsd
Cameras Near Roundabout

- New Fixed Camera
- Multi-Imager Camera

Legend

- Wireless Link
- Light Pole

All Cameras



AT Poles for Cameras

