

AVONDALE TE WHAU HERITAGE WALKS



AVONDALE TE WHAU HERITAGE WALKS

THIS TRAIL WILL TAKE APPROXIMATELY AN HOUR AND A HALF TO WALK.

It provides an overview of Maori settlement in the area, later land transactions and settlement by European settlers, early industries and the development and consolidation of the community. The trail features some of the earliest surviving places in Avondale including St Ninian's Church built in 1859-60. It includes buildings and sites associated with significant aspects of Avondale's historic development such as commerce and retail, accommodation and hospitality, law and order, education and transport. Avondale's historic places bring to life the stories and people who have lived and worked here. A second trail included in this booklet features important places in the Rosebank Road area which highlight particular aspects of Avondale's history such as archaeological evidence which remains of Maori settlement sites and early industries on Rosebank peninsula, later uses such as market gardening and development of the Kiwi Fruit, Avondale College, the George Maxwell Cemetery and the more recent industrial development.

Avondale Heritage Walks www.avondale.net.nz

TOWN CENTRE & ROSEBANK PENINSULA

Pages Store in Avondale c. 1910 when it was Bollard and Woods store.
AVONDALE- WATERVIEW HISTORICAL SOCIETY COLLECTION.



These areas include a number of buildings and elements that are registered by the New Zealand Historic Places Trust or scheduled in the Auckland City Council's District Plan as being of heritage value.

Items that are registered or scheduled are identified within this brochure using the following key:

AUCKLAND CITY COUNCIL DISTRICT PLAN

SCHEDULED IN CATEGORY A:

Buildings, objects and places of outstanding natural beauty, or architectural, scientific or historical significance well beyond their immediate environs. Demolition of a Category A Item is a prohibited activity.

A

SCHEDULED IN CATEGORY B:

Buildings, objects or places of such quality and character that they should not be removed, damaged or altered significantly.

B

NEW ZEALAND HISTORIC PLACES TRUST

REGISTERED IN CATEGORY I:

Places of special or outstanding historical or cultural heritage value.

I

REGISTERED IN CATEGORY II:

Places of historical or cultural heritage value.

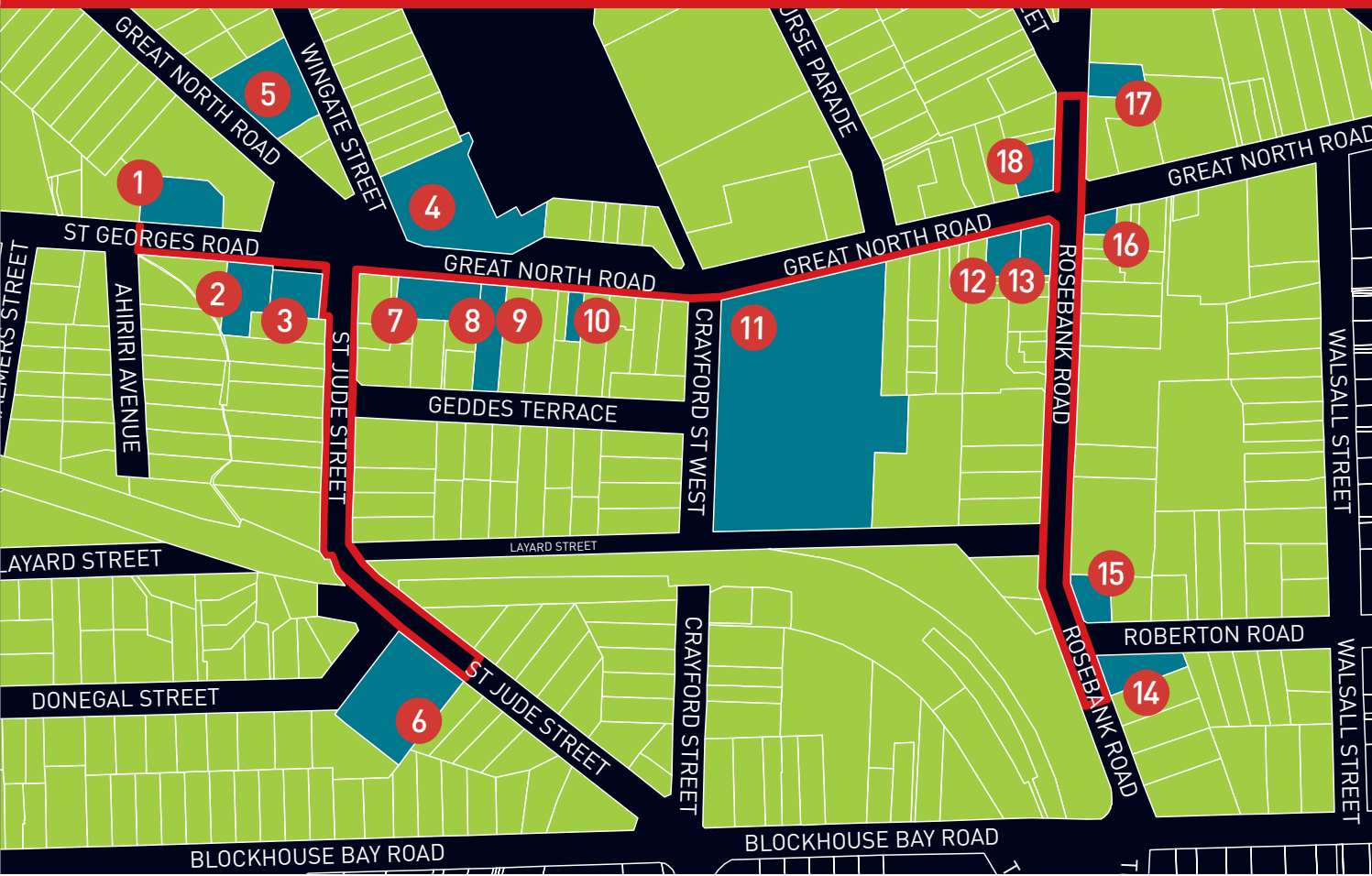
II

These heritage walks have been developed collaboratively by Auckland City Council, Avondale Community Board, Avondale Business Association and Avondale-Waterview Historical Society. Maori history has been prepared by Ngati Whatua o Orakei Ltd. Historic research by Lisa Truttman. Coordinated by Matthews & Matthews Architects Ltd.

AVONDALE TE WHAU

HERITAGE WALKS TOWN CENTRE

- | | | |
|--|------------------------------------|---|
| 1. St Ninian's Church and Churchyard | 6. St Jude's Church | 13. Unity Building |
| 2. Avondale Town Hall/ Hollywood Theatre | 7. Page's Building | 14. Bluck Building |
| 3. First Avondale Public Hall | 8. Former Police Station | 15. Station Store |
| 4. Site of former Avondale Hotel | 9. Allely Building | 16. Former Post Office |
| 5. Site of Avondale Stables | 10. Trigg and Dane, Coach Builders | 17. Former Masonic Hall (Titirangi Lodge) |
| | 11. Avondale Primary School | 18. Site of the first Whau Hotel |
| | 12. Excelsior Chambers | |



The Avondale Railway Station with a steam engine hauling open goods wagons. The Post and Telegraph Office is on the left.

SPECIAL COLLECTIONS, AUCKLAND CITY LIBRARIES 7-A10056

AVONDALE TE WHAU



This area is known to tangata whenua as Te Whau, also the name for the river that defines Avondale's western boundary. Te Auaunga or the Oakley Creek marks the eastern edge of Avondale, a name referring to the numerous whirlpools along the creek. There were once many seasonal camps and papakainga (villages) along the edges of Te Whau and Te Auaunga, the remnants of which can still be found surviving the rapid residential and industrial development since the 1860s. Seasonal camps were used particularly around the Whau to hunt for the Kuaka or Godwit. Tens of thousands of Kuaka would move from the Waitemata to the Manukau harbour on the changing tides to feed, falling prey to Maori who knocked them out of the sky with long poles as they passed overhead. The fortified slopes of Owairaka (Mt Albert) and Te Whau Pā, the western headland of Blockhouse Bay on the Manukau Harbour provided a safe haven in the event of aggression from enemies.

Joseph James Craig's Pottery and Brick works, Avondale, in 1898 were said to be the largest in New Zealand producing up to 90,000 bricks per day.

7-A12491, SPECIAL COLLECTIONS, AUCKLAND CITY LIBRARIES



The headwaters of the Whau River at Portage Road was an important early transport route for Maori as waka could be hauled a short distance to gain access to the waters and resources of either the Manukau or Waitemata Harbours. Te Kotuitanga (the lashing together of canoes) in Avondale South commemorates an attack on a group who were lashing together their canoes in preparation for sailing up the Whau Creek to the Waitemata. The Whau River itself takes its name from the native tree *Entelea arborescens*, a lowland coastal tree or shrub with soft, light green heart-shaped leaves. As the common name – Corkwood suggests, it is a highly valued resource for floatation devices and waka fixtures.

In 1840, the first Governor – Hobson, accepted 3,000 acres of central Auckland land from Ngati Whatua chief, Apihai Te Kawau. A further 8,000 acres was gifted when the Governor finally arrived in his new capital in March 1841. The Whau portage was the western boundary of this second gift and the land was quickly on-sold by the Crown to settlers at a huge profit. Maori continued to camp and harvest resources here up to the 1860s with the New Zealand Land Wars unsettling relations between the Crown and Maori. Waka were abandoned on beaches at Pt Chevalier and Motu Manawa (Pollen Island) for many years following, as local Maori hastily joined their relatives in the war effort in the Waikato or retreated to the neutral Okahu Bay settlement.

The sale of land that was to become the Avondale shopping centre occurred from 1844. Land in the area at this time is described as being covered with dense native scrub. Great North Road was a narrow dirt track and the Whau River provided the main form of transport, until at least around 1870 when Great North Road was better formed, and 1880 when the Auckland-Kaipara Railway line opened.

In 1845 the Great North Road was laid out in response to the threat of attack on Auckland by northland Maori. Initially following New North Road as far as Rocky Nook, it then continued along Western Springs Road to the present Great North Road. The road from Mt Albert westward was known as the Whau Highway or Whau Road. Work on this route continued and by the late 1860s this was the main route to the area. During the 1870s it was properly formed and metalled.

The earliest industries established in Avondale included the Benjamin Gittos tannery, and Pollen's Brickyards at the end of Rosebank peninsula, where the Whau River allowed for convenient transport.

Further auctions of land occurred in 1859, and the hub of a settlement in Avondale was formed around this time. The existing St Ninian's Presbyterian Church was built near the junction of Great North Road and Wingate Street, opening at Easter 1860. The Greytown subdivision comprised all the area bounded by Great North Road and Blockhouse Bay Road between St Judes Road, and current Rosebank Road, that is the whole of the east side of the present Avondale shopping centre. A horse bus service from Auckland to Henderson via the Whau started in 1861, and Avondale was an important early staging post. The first Post Office was set up in the store on the corner of present Rosebank Road and Elm Street in 1863. The first bakery was established on the corner of Great North Road and Crayford Street in 1864.

The earliest local government was the Mt Albert Highway District Board which was established in 1867, succeeded by the Whau Highway District the following year. The existing Public Hall in St Georges Rd was also built in 1867, and the first library established. By 1875 there were three stores, a carpenter and two blacksmiths.



The plan of the Greytown Auction in 1863 shows a store, the first Greytown Hotel and a Chapel in Avondale at this time. Map of Greytown, 1863.

SPECIAL COLLECTIONS, AUCKLAND CITY LIBRARIES

Looking west across the Avondale Racecourse showing the new grandstand, race goers and the race track in 1902.

SPECIAL COLLECTIONS, AUCKLAND CITY LIBRARIES 7-A12490



The opening of the Auckland-Kaipara Railway line in 1880 provided impetus for further development, with increase in land values in the area, and further residential development. The centre was further consolidated around this time with the opening of the primary school on its present site in 1882 and the establishment of the Jockey Club and racecourse in 1889.

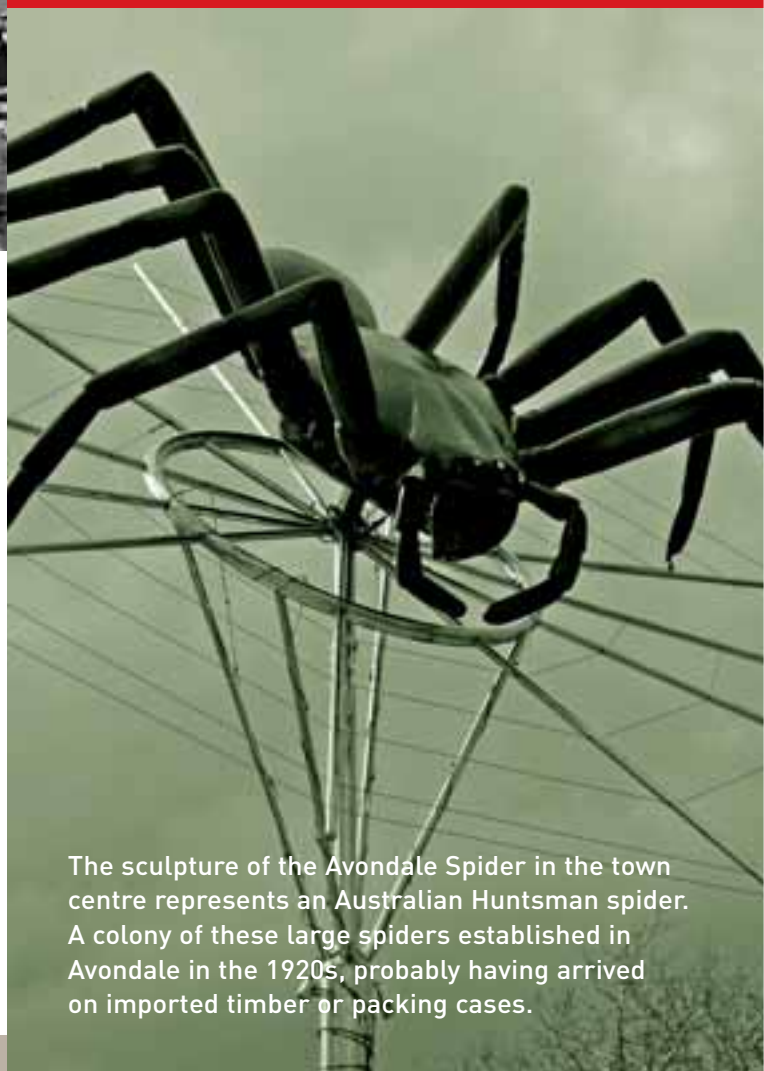
The district was renamed Avondale in 1882, and it is possible that this name came from County Wicklow in Ireland, the birth place of Avondale pioneer John Bollard. Bollard was Chairman of the Whau Highway District Board, the Avondale Roads Board, the Whau and Avondale School Committees, and was a land agent and Member of Parliament for Eden. He is known as the "Father of Avondale".

By the 1890s market gardening was the predominant use of the Rosebank Peninsula, and this use remained until the 1950s.

As the population in the area steadily increased, a significant period of development occurred in the 1920s when many of the existing buildings near the Rosebank Road intersection were built. The Avondale Picture Theatre opened in the late 1920s, featuring the new "talkies". The tram service was extended to Avondale in 1932.

Extensive post-World War II development in the shopping centre, the increase in residential subdivisions, along with the establishment of the Rosebank heavy industrial area from the late 1950s helped make Avondale a thriving suburb of Auckland.

AVONDALE TOWN CENTRE



The sculpture of the Avondale Spider in the town centre represents an Australian Huntsman spider. A colony of these large spiders established in Avondale in the 1920s, probably having arrived on imported timber or packing cases.

**BEGIN THIS WALK IN ST GEORGES ROAD,
OPPOSITE AVONDALE MEMORIAL RESERVE.
LOOK OPPOSITE TO ST NINIAN'S CHURCH.**

1.



1. ST NINIAN'S CHURCH AND CHURCHYARD 1-19 ST GEORGES ROAD B

St Ninian's Church is Avondale's oldest building, with construction starting on November 14 1859, and opening services held at Easter, April 8 1860. The building rested on scoria boulders, with hand-hewn kauri plank construction and kauri pews. It was the district's first school building (the desks fixed to the wall so they could fold away for Sunday services) and before the building of the Public Hall across the road was the first location for soirees and town meetings. In the 19th century, the parish extended as far as Helensville, and it was in July 1873 that Rev. David Hamilton perished on the way to preach at Whatipu. His grave was the first in the little cemetery attached to the Church (the cemetery was closed save for family plots in 1914). The Church was originally known as simply the Presbyterian Church, and in 1935 was renamed St Ninian's, after the saint missionary to the Southern Picts. In 1984 the church officially closed, and was sold to Auckland City along with the cemetery in 1988. It is currently run as part of the Avondale Community Centre. Other noted people buried in St Ninian's cemetery include: John Neale Bethell (of Bethell's Beach), William Forsyth (builder of the Public Hall), and Jessie MacKenzie (the "Danish Princess").

Walk north along the eastern side of St Georges Road

2. AVONDALE TOWN HALL/HOLLYWOOD THEATRE 16-18 ST GEORGES ROAD B

The Public Hall was on this site from 1867 until it was shifted to its present position beside the Town Hall Building, so this has been a site for community meetings and entertainment continuously since the 19th century.

In January 1915, the site was transferred from the Public Hall Trustees to the Avondale Road Board. It was decided to keep the old wooden hall on the site and to build an ornate brick front, complete with imposing columns, wide stairs to the entrance, and a dome on the roof. The architects for this façade and the offices and meeting rooms included were Holman & Moses. Work began around May and was completed in October of that year. Harry Empson continued showing his movies in the "new" Town Hall.

Avondale became a borough in 1922. The Borough Council decided in 1923 that Avondale merited a grander Town Hall than just an impressive frontage with old wooden hall behind. The old hall was shifted, and the rest of the existing building was added, opened on 31 October 1924. After amalgamation with Auckland City in 1927, a succession of cinema managers including the family of Rudall Hayward ran the picture theatre, called the Grosvenor Cinema from the 1950s and then dubbed the Hollywood from 1966 by Jan Grefstad.

2.



**View of the Avondale Town Hall which later became
the Hollywood Cinema in St Georges Road.**

SPECIAL COLLECTIONS, AUCKLAND CITY LIBRARIES 580-1018.

3.



3. FIRST AVONDALE PUBLIC HALL 12-14 ST GEORGES ROAD **B**

The Public Hall was built in 1867, funded from proceeds of special concerts staged by the Whau Minstrels (a group of workers from the Gittos tannery). The builder was local resident William Forsyth, designed by another local Mr. Holloway. It was the second location for the district school until 1882, and the place of many soirees, town meetings and Highway District Board meetings. In 1868, the first district library was set up, and later incorporated before folding in the 1880s. In the 1870s, the cost of hiring the hall for the night was the grand total of "one pound sterling".

The hall was the place of an event that changed the history of Avondale, West Auckland and the Kaipara District when a meeting of around 50 people, including John Bollard and John Buchanan (Whau District), John Lamb (Riverhead), John McLeod (Henderson's Mill), Phillip McLeod (Helensville) and Joseph McMullen Dargaville (Provincial Council member) agreed to organise a petition in favour of the planned railway to go through Avondale on its way to the Kaipara.

On 27 June 1931 the Avondale Public Library was opened as a branch of Auckland City Libraries in the old building, and was there until 1973. The hall has also served as a Citizens Advice Bureau, and traffic department office.

Looking diagonally across the major intersection of the five roads is the site of the former Avondale Hotel

4.



The Avondale Hotel in the 1880s.
SPECIAL COLLECTIONS, AUCKLAND CITY LIBRARIES; 7- A3039

4 SITE OF FORMER AVONDALE HOTEL 2027 GREAT NORTH ROAD

There have been three hotels on this site: James Palmer's first hotel, destroyed by fire (c.1870-1872), Palmer's second hotel, again destroyed by fire (1873-1888), and Moss Davis' hotel, demolished in 1967. The hotels here were the heart of Central Avondale, the site of town meetings, a traveller's rest stop, and even a Post Office (1912-1938). James Palmer utilised the strategic position of the site at the Five Roads intersection, and the fact that it was the last hotel before weary travellers reached Henderson's Mill.

Look across to the group of small gabled buildings in Great North Road

5. SITE OF AVONDALE STABLES 2059-2073 GREAT NORTH ROAD

Regular coach omnibus services through Avondale to Henderson's Mill began on 20 March 1861, operated by W. J. Young. By 1884, the Northern Omnibus Company had formed and had a two-storey stables building erected on this site, designed by E. G. Wade. The stables burned down on 14 November 1924. The present building dates from after that time, built by Charlie Pooley and local builder Ernie Croft.

5.



Turn right into St Judes Street, and walk up over the railway line.

6.



St Jude's Church in 1929, with the bungalow style vicarage at the right.
SPECIAL COLLECTIONS, AUCKLAND CITY LIBRARIES 4-8432

6. ST JUDE'S CHURCH **B** 25 ST JUDE STREET

The first formal Anglican services in Avondale were held in 1874 at the Public Hall. In that year, the congregation committee agreed to accept the offer by Avondale hotelkeeper James Palmer of land bounded by (then) New North Road and Palmer Street (now called St Judes and Donegal Streets). Plans were drawn up for the new church in 1882, while in May 1884 amended plans were submitted by an architect named Mr Bartley, and work began in August. The foundation stone was laid on 13 September, and the first service here was on December 23 1884. St Jude's church is the second oldest church built in Avondale after St Ninian's. The Founder and original Trustee of the church was John Bollard (1839-1915), a man who had a great impact on the early history of Avondale.

Return to Great North Road, cross St Judes Street and head north.

7. PAGE'S BUILDING 2016-2020 GREAT NORTH ROAD

Completed in 1903, and designed by J Currie, this was the Avondale branch of the A. W. Page grocery and supply business based at Kingsland. It was the beginning of the modern shopping centre, the first purpose-built retail block. Edward Wood and Ben Bollard leased the building from Arthur Page in 1906, and set up the Bollard & Wood store until 1922 when William Amos set up the "Spot Cash" store there (later operated by his son Vic Amos until 1967). Like the Avondale Hotel, Page's Store benefited from the location close to the Five Roads intersection, and that there was no equivalent service centre for goods and supplies between Avondale and Henderson. Deliveries from the store were made all over West Auckland.



Pages Store in Avondale c. 1910.
AVONDALE- WATERVIEW HISTORICAL SOCIETY COLLECTION.

8.



8. FORMER POLICE STATION 2004 GREAT NORTH ROAD

For nearly 90 years, from 1906 to 1996, this was the site of the Avondale Police Station, designed by C. R. Vickerman the district engineer. Plans for the buildings, the lockup and a stable were prepared by the Public Works office. The stable and lockup were at the rear of the site, alongside the horse paddocks that were once there for both the police station and the adjacent Page's store. Unlike most masonry suburban police stations this timber building still retains its original kauri exterior.

9. ALLELY BUILDING 2000 GREAT NORTH ROAD

Robert Joseph Allely purchased the land where this building stands in 1911 from William Hanson Blayney. This is the earliest two storey retail building in Avondale and it replaced an earlier timber shop on the site. Robert Allely had his chemist shop at ground level and dental surgery above. Allely sold the property in 1912, but remained as a tenant there until the early 1920s.

During his time in Avondale in the 1910s and early 1920s Robert Allely was Avondale's source of general medical help, as well as the dentist. He and his wife set up an influenza hospital on the Avondale Racecourse during the pandemic of 1918, working at all hours to help treat the locals, including those from Blockhouse Bay and West Auckland. For his services during this time, the Avondale Road Board held a special presentation in January 1919. Apparently, his work badly affected his health, and he'd left Avondale by 1922.



10.



10. TRIGG AND DANE, COACH BUILDERS 1980 GREAT NORTH ROAD

Trigg & Dane had set up their business on this site by 1916. Charles Alfred Trigg was a bicycle repairer by trade, with sign writing as a side specialty. The site is notable as being that of an early service and repair garage that served early horse and cart traffic, as well as motor vehicles. Charles Trigg had sole ownership by 1920, and by 1926 had one of the first service garages in the area to have a "kerbside benzine pump" on a forecourt, the floor of which is still part of the left-hand side of the existing shops. By 1966, the Avondale Auction House was trading from this site, and added the right-hand side of the present shop in 1970. By the 1980s, the business became known as Avondale Spiders, after the local icon. Avondale Spiders closed down in mid 2006.

11. AVONDALE PRIMARY SCHOOL CNR GREAT NORTH ROAD AND CRAYFORD STREET

The Avondale Primary School was opened on its present site here on 30 May 1882. Prior to this, classes were held first at St Ninian's Church (from 1860), and the Public Hall (from 1867). The site was purchased from Mr. H Hassell for £110, and William Price built the original two-classroom school, designed by architect Mr. Allwright. Over the years the school was added to and adapted. Just before the First World War a Primers Block was built close to Layard Street. The first major change came during 1971-1972 when the old Standards and Primer blocks were demolished, and the current school took shape. The administration block was built during 2002-2003. Avondale Primary School once served a catchment extending from Pt Chevalier to Blockhouse Bay, and on into New Lynn, Titirangi and Kelston.

11.



The old primers
block at Avondale
Primary School.
AVONDALE PRIMARY
SCHOOL COLLECTION

Cross Crayford Street.

12.



12. EXCELSIOR CHAMBERS 1880 GREAT NORTH ROAD

The NZ Herald reported in January 1926 on the planned construction of "two large blocks of shops" at the Great North-Rosebank intersection – one of these thought to be Excelsior Chambers.

Early businesses in the block included a draper, chemist, solicitor and confectioner. Additions were made in 1929 and 1937-39. The Excelsior Chambers was the third major block of shops constructed on the Great North Road after the Page's store (1903) and the Fearon block (c.1924), and took advantage of the concreting of Great North Road in 1925 which made Avondale easier to get to from the central city and West Auckland, and heralded the boom years of this area.

13. UNITY BUILDING 1874-1878 GREAT NORTH ROAD

The Unity Building was completed in 1932, the year that trams came to Avondale, and was intended by the building's owner, W. J. Tait, to take full advantage of the proximity of the new tram terminus. It is the only major building in Avondale named as a result of a school competition.

13.



Turn right into Rosebank Road

14. BLUCK BUILDING 13-17 ROSEBANK ROAD

This block built in 1915 by Frederick Bluck and his son, Frederick Gordon Bluck was opposite the station on Browne Street. Bluck set up "Fred Bluck & Son" land agents in the block. Fred Bluck's career included being a JP, Avondale orchardist, clerk of the Avondale Road Board, real estate agent, previously station master and storekeeper in Waitara, and teacher in South Auckland. The Bluck Buildings represent the old Avondale focal point prior to the widespread use of the motor car. Along with the Station Store, it was intended to take advantage of the foot traffic to and from the railway station.

14.



15. STATION STORE 25 ROSEBANK ROAD

The Station Store was built in 1912 designed by architect Hugh Grierson. A second storey was added by 1913 providing living quarters. It has been a grocers, drapers, and dairy over the years, G J Philp ran the store in 1913, advertising "Merchant, Provisions, Grain and Produce"

At the back of the store was a "high door", with a lifting beam for unloading items delivered by horse & cart. There were stables at the back. The concreting of the Great North Road ended any hopes of making this area a major retail centre.

15.



Station Store
in 1913.
KIRKPATRICK FAMILY
COLLECTION.

Walk back down Rosebank Road to Great North Road

16.



16. FORMER POST OFFICE 1864 GREAT NORTH ROAD

This building was the first purpose-built Post Office in Avondale. Prior to 1938, the Post Office had been part of general stores (from 1863), the railway station (until 1912), and housed in the former Avondale Hotel (1912 -1938). The building was officially opened on August 19 1938 by the Hon. H.G.R. Mason, local MP, Attorney General and Minister of Justice. It was built by the firm of J.A. Penman and Son, and the architect was Llewellyn Stanley Piper of LS Piper and Son (who also designed the Auckland Electric Power Board building in Newmarket). The siting of the Post Office changed the position of the centre of Avondale to the intersection of Great North Road and Rosebank Road, from the Five Roads intersection. From that time on, the Avondale shopping centre spread as a strip along the main road.

Cross Great North Road and continue down Rosebank Road.

17.



17. FORMER MASONIC HALL (TITIRANGI LODGE) 69 ROSEBANK ROAD

In 1894 the land on which this building now stands was transferred to Thomas and Rebecca Grubb who started a bakery on the corner site (now the Fearon Building) which operated until 1905. Daniel Robertson bought the land and buildings in 1909, and ran a general store. The rear of the site had housed stables and was sold to the Trustees of the Titirangi Lodge no. 204 of the Ancient Free and Accepted Masons of New Zealand. The Lodge is believed to have been built around 1912 -1919.

*Return to intersection of Great North Road and Rosebank Road.
On south west corner is site of first Whau Hotel (currently Ray
White Real Estate)*



18.SITE OF THE FIRST WHAU HOTEL CNR ROSEBANK ROAD AND GREAT NORTH ROAD

We know from early maps of the district in the 1860s that this was the site of Avondale's first Whau Hotel, on the north-eastern corner of John Bollard's farm. Taking advantage of proximity to a natural spring flowing down the hill from what is now the railway station, John Priestley had a 10pm closing license from April 1863. By October that year Henry Denyer was the publican, followed by James Nugent Copland, and David Henderson by 1867. Sometime between 1867 and 1870, the first hotel closed and the business shifted to the Five Roads Intersection to the south.

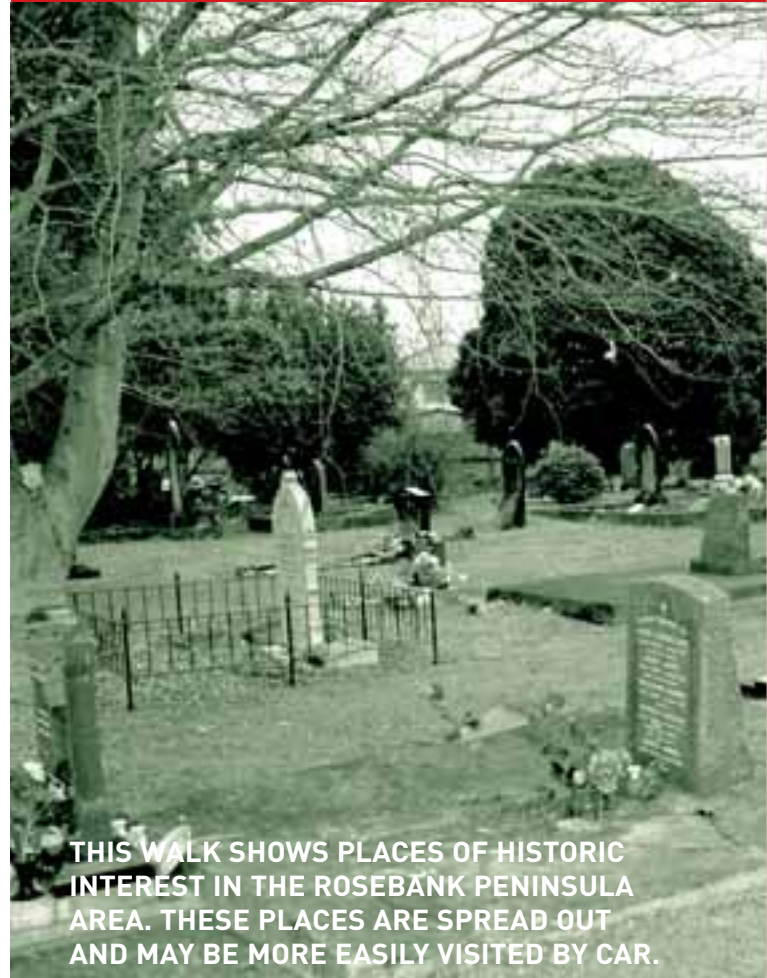
In the 20th century an old wooden shop stood here, but was destroyed by fire. In the early 1950s the Avondale Business Association used the empty space to put up Christmas trees. The present building dates from the late 1950s.



Part of plan for the auction of land in "Greytown", in Avondale in 1863.
SPECIAL COLLECTIONS, AUCKLAND CITY LIBRARIES



ROSEBANK PENINSULA



THIS WALK SHOWS PLACES OF HISTORIC
INTEREST IN THE ROSEBANK PENINSULA
AREA. THESE PLACES ARE SPREAD OUT
AND MAY BE MORE EASILY VISITED BY CAR.

There were once many seasonal camps and papakainga (villages) along the edges of Te Whau and Te Auaunga. These camps were used particularly around the Whau to hunt for the Kuaka or Godwit. As tens of thousands of Kuaka moved from the Waitemata to the Manukau harbour on the changing tides to feed, Maori used long poles to knock them out of the sky as they passed overhead.

Remnants of some of these camp and village sites can still be found surviving the rapid residential and industrial development since the 1860s. Rangimatariki is one such papakainga that was located near the Patiki Road interchange.

Land sales for 100 acre allotments on the Rosebank Peninsula began in 1845, but these were mainly to speculators who did not permanently settle here. The main land use for the scrubby clay bank was to run cattle and pigs. Later, as pastures took hold, pig and crop farming was introduced.

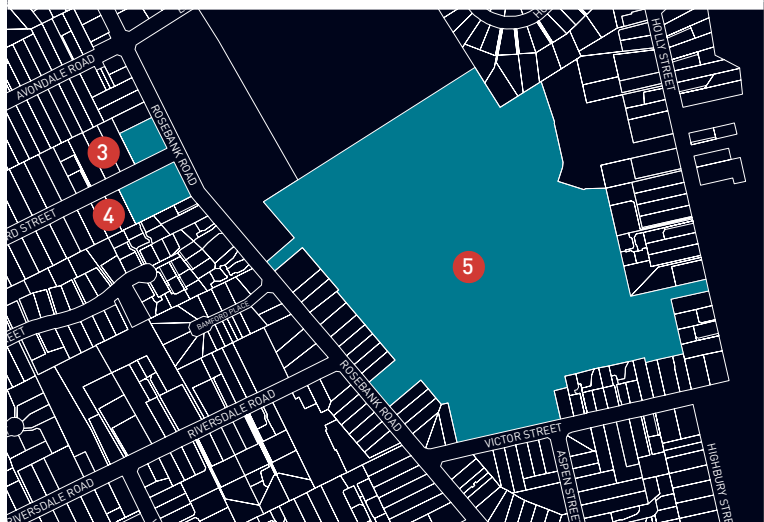
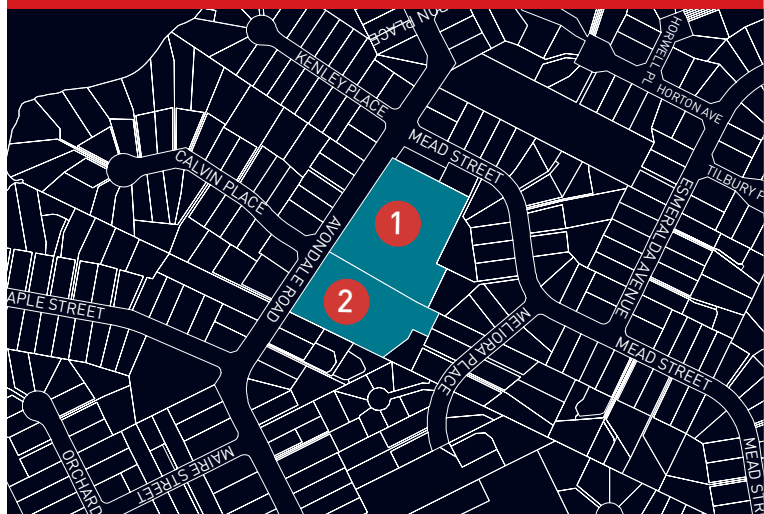
Dr. Daniel Pollen bought land at the end of the peninsula in 1855, and by 1863 had started West Auckland's first brickyard on the shores of the Whau River, providing most of the bricks for the Avondale Asylum (1864-1867). Other brickworks along the Whau River included Bourke's and Archibald Brothers. Small tanneries and varnish works are also known to have been in operation here. Other settlers in that same period included Dr. Thomas Aickin, Robert Chisholm and John Bollard. Until the late 19th century, the best way in and out of the peninsula was by way of the Whau River.

From the mid 19th century until well into the next, plans were made and proposals put forward for a great canal linking the Waitemata and Manukau Harbours. This canal would have followed the line of the Whau River to the portage through to near Blockhouse Bay. However, the completion of the main trunk railway south in 1908, as well as the engineering challenges in constructing the system of locks for the canal, meant that the plan gradually faded away. Canal Road and Ash Street (formerly Wharf Road) are reminders of this scheme today.

From the early 1950s, a change in land zoning meant that the market gardens and farms of Rosebank gave way to industrialisation at the far end of the peninsula, and increased residential housing closer to Avondale township. Rosebank is today the site of one of Auckland's most important industrial and commercial areas.

ROSEBANK PENINSULA

1. Former Home of Hayward Wright
2. Meliora
3. Former Victoria Hall
4. George Maxwell Cemetery
5. Avondale College



1. FORMER HOME OF HAYWARD WRIGHT 121 AVONDALE ROAD

In the 1880s both the Aickin and Chisholm estates were subdivided and auctioned off, allowing for increased settlement and intensified land usage in the area for the first time. This ushered in the era of market gardens, orchards and plant nurseries, by which Avondale became best known in the first half of the 20th century. Best known of these was the nursery of Hayward Wright (1873-1959) down Avondale Road. Here, just after World War 1, he selected and propagated the "Hayward" cultivar of the Chinese gooseberry (today known as kiwifruit). The "Hayward" is still the predominant kiwifruit cultivar commercially grown in countries around the world.

1.



Hayward Wright
with kiwifruit
canes.

IMAGE REPRODUCED
WITH KIND PERMISSION
OF HORT RESEARCH

2. MELIORA 103 AVONDALE ROAD

In 1893, Thomas and Ann Fletcher Jackson, a pioneering Quaker couple, came to Avondale with their family and set up their home at "Meliora". In 1897, they headed a committee of their neighbours in arranging for the purchase of a building from Eden Crescent in the city, transporting it to its current site at the corner of Orchard Street and Rosebank Road, across from the George Maxwell Cemetery.

2.



3. FORMER VICTORIA HALL 1 ORCHARD STREET

This building was named the Victoria Hall after Queen Victoria (1897 was her Jubilee year), and has served as a place of worship ever since.

3.



4.



4. GEORGE MAXWELL MEMORIAL CEMETERY CNR OF ROSEBANK ROAD AND ORCHARD STREET

The George Maxwell Memorial Cemetery is the older of the two cemeteries in Avondale (the other next to St Ninians Church). The earliest burial here was on 3 August 1862 (William Aickin, baby son of Dr. Thomas Aickin who donated the land to the Church of England as a cemetery that year). Dr. Aickin was the first medical superintendent at the Auckland Lunatic Asylum in the 1860s. He is buried here along with his family and descendants.

The cemetery was administered by a trust of local residents from 1886 to 1958. Since then, the site has been administered by the Parochial District of Avondale. During the 1960s sheep were kept on the cemetery grounds to maintain the lawn. One animal died and was buried in the cemetery. In 1991 the cemetery was given its present name after the death of caretaker George Maxwell.

There are five military memorials here, those of **Wesley Neal Spragg, Stanley Howard Pilkington, George Child, R. V. McVeigh** and **Ba Shaw**.

Buried here are also those who helped build Avondale from a rural backwater to a modern suburb of Auckland. They include:

Thomas and Ann Fletcher Jackson: founders of the Victoria Hall Church (as still seen across Orchard Street from the cemetery). Memorialised by the renaming of Fonteyn Street west to Meliora Street (after their homestead).

The Bollard family: those buried here include John Bollard, the Father of Avondale, and his son Ben Bollard (Avondale's first postman). The memorial to Richard Bollard commemorates him as Minister of Internal Affairs until his death in 1927. John Bollard was the first Chairman of the district's school committee from 1863 until his death, the first Chairman of the Whau Highway District

John Bollard, photo dated 1902.

SPECIAL COLLECTIONS, AUCKLAND CITY LIBRARIES, 7-A7345.



board (later Avondale Road Board), was one of those instrumental in naming Avondale and encouraging the Government railway scheme through the district, and was the first President of the Avondale Jockey Club from 1889 until his death.

William John Tait: the second Mayor of Avondale (1923-1927), and the first President of the Avondale Businessmen's Association from 1939. He had the Unity Buildings erected in Avondale Mainstreet.

Francis Gittos: Son of tanner Benjamin Gittos, he was on the early committees for the district school, Whau Public Hall, and proposed the first public library in the district, in 1867.

Arthur John Morrish: The editor and publisher of West Auckland's first local newspaper, prepared in Avondale, The News from 1914 until around the 1940s.

Dr. Daniel Pollen: Premier of New Zealand 1875-1876, elected to Auckland's Provincial Council from 1856 until 1865, one of the first settlers in the Whau district, at the end of Rosebank Peninsula, in the 1850s. By 1863, he had started West Auckland's first brickyard, on the shores of the Whau Creek.

Binsted family: Henry and James Binsted opened a butchers shop in Avondale in 1886, and also ran an abattoir in New Lynn (now a reserve). By October 1888 "Binsted's Corner" had become an Avondale landmark. Henry Binsted died of typhoid fever in 1895, and James died in 1920. The shop was bought by R & W Hellabys chain of shops.

Exler family: Moses Exler started the family pottery business in New Windsor in the mid 1870s. Bricks from that site were used for Binsted's butchery, the horse bus stables on Great North Road, and part of St Jude's Church.

William and Thomas Myers: Local blacksmiths on St Jude's Street from the 1890s until the 1960s.

Ernest Croft: Avondale Borough Councillor and local builder.

Albert Edward Bailey: Auckland City Councillor from 1956-1959, and again from 1962 to 1965. Owner of the Avoncourt Hotel until 1967 (former Avondale Hotel), and president of the Avondale Businessmen's Association.

Sydney Margaret Hamilton: Sister of William Rowan Hamilton, the Royal Astronomer of Ireland during the 19th century. A mathematician in her own right, she came to live in Avondale in 1875. She was a friend of Sir George Grey, former Governor of New Zealand, who attended her funeral here in 1889.

5. AVONDALE COLLEGE

The site and original buildings here were initially developed during World War II as a hospital for American armed forces, in the expectation of an extended campaign in the South Pacific. The New Zealand Government arranged for the construction of an extensive military hospital here on a site that included all of the present College grounds together with the adjacent Eastdale Park and fields. Just before the end of the war, the facility was transformed into the classrooms and sports fields for Avondale College and Avondale Intermediate, which both opened in 1945. Since then the College has been progressively developed and today Avondale College is one of Auckland's largest secondary schools catering for over 2500 students.

PRIVACY

These walks are along public roads and contain historical information about buildings and places in the area, most of which are private property. Please respect the environment and privacy of local businesses and owners.